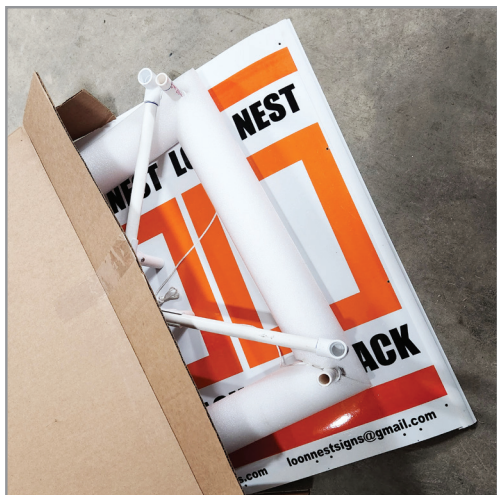


LOON NEST SIGN ASSEMBLY

LOON NEST SIGNS.COM

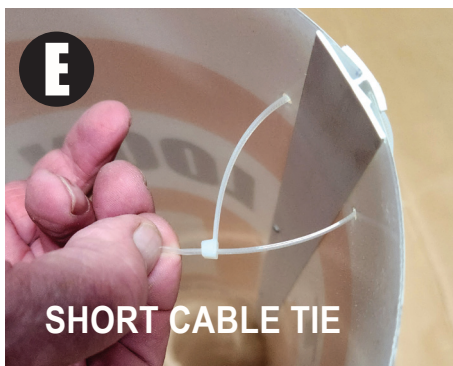
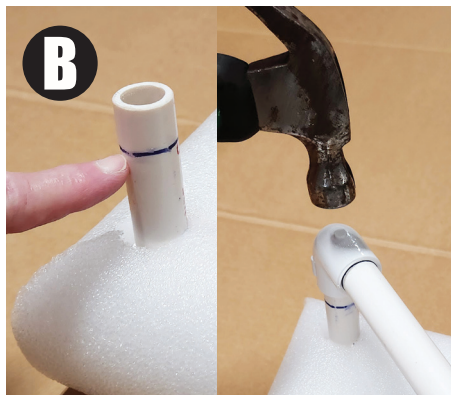
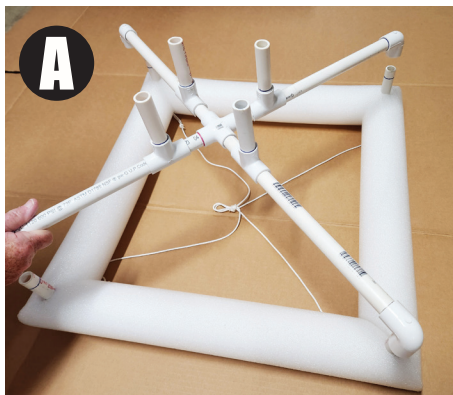


INCLUDED:

- Foam base with anchor cord & upright for cross
- PVC cross with uprights for sign
- Loon Nest Sign with plastic joining strip
- Parts package: (4) short & (4) long length cable ties; (8) Stainless Steel screws with #2 square tip; (4) Concave stainless steel washers

TOOLS NEEDED:

- Drill with 1/8 inch bit
- Hammer or Mallet
- Screwdriver handle to fit #2 square tip
- Side cutter



1. Lay square base with foam on a flat surface with PVC uprights up.
2. Lay PVC cross over base & line up elbows of cross over uprights on each corner. **(A)** Tap down to the mark. **(B)**
3. Drill 1/8 hole in each elbow. Use the #2 tip to fasten the stainless steel screws. **(C)**
4. Lay the sign on a flat, clean surface. Roll the sign to approx 7" dia tube. Carefully insert the end of the sign in the plastic joining strip. **(D)** A second pair of hands can help to hold the sign together until you get it fastened.
5. Feed the shorter cable ties through the provided holes from the inside of the sign to the outside so that the locking ends are on the inside of the cylinder, and tighten **(E)**. After you square the sign up you can retighten the cable ties, making sure it is completely set into the joining strip. Trim excess cable ties.
6. Place the completed cylinder over the four PVC uprights in the center of the cross piece until it touches the top of the PVC T's. Do not put it down over the PVC T's. **(F)** Rotate the sign until the pre-punched holes line up with the 4 PVC upright posts. **(G)**

CONTINUED



7. Using the longer cable ties, secure sign to the PVC T through pre-punched holes as shown in image **(H)**. **DO NOT SECURE AROUND THE UPRIGHT. SECURE AROUND THE BOTTOM OF THE PVC T.** Trim excess cable tie ends on cross.
8. On each of the 4 posts, drill a 1/8" hole through the sign into the PVC upright approx 1" above the zip tie hole **(I)**. Install a stainless steel screw with concave stainless steel washer & tighten, making sure the washer matches curvature of sign **(J)**.
9. Install a sufficient weight on your anchor line (approx 12 to 15 pounds) through string loop at center of square base **(K)**. Once weight settles to lake bottom, pull up anchor rope approximately 12" & tie to loop at bottom of floating base. Anchor rope should be taut but not so tight that foam is pulled underwater.

